

Product Detail

The Renfrew bollard is manufactured with engineering-grade polyurethane, which is cast around a steel core. Resulting in an extremely strong that doesn't rust. can be manufactured to anti-ram specifications.

The Renfrew will fit with most landscapes, whether traditional or contemporary. It is also ideal for coastal areas where high levels of saline are present.

Renfrew bollards are supplied with a black, two-part polyurethane coating finish. This increases chip resistance and weathering characteristics, which is ideal for heavily trafficked areas.

- Length - 1050 mm
- Diameter – 160 mm
- Weight – 16kg
- Fixing- Root Fixed, Base-plated, Removable,

Contact Us

Here at Street Furnishings, we have become the trusted supplier to many Councils, Contractors, Builders Merchants for over 30 years. Through our knowledge of products built up over time. We are proud in saying “There isn't much that we can't supply!”

Phone: 01189 404 717

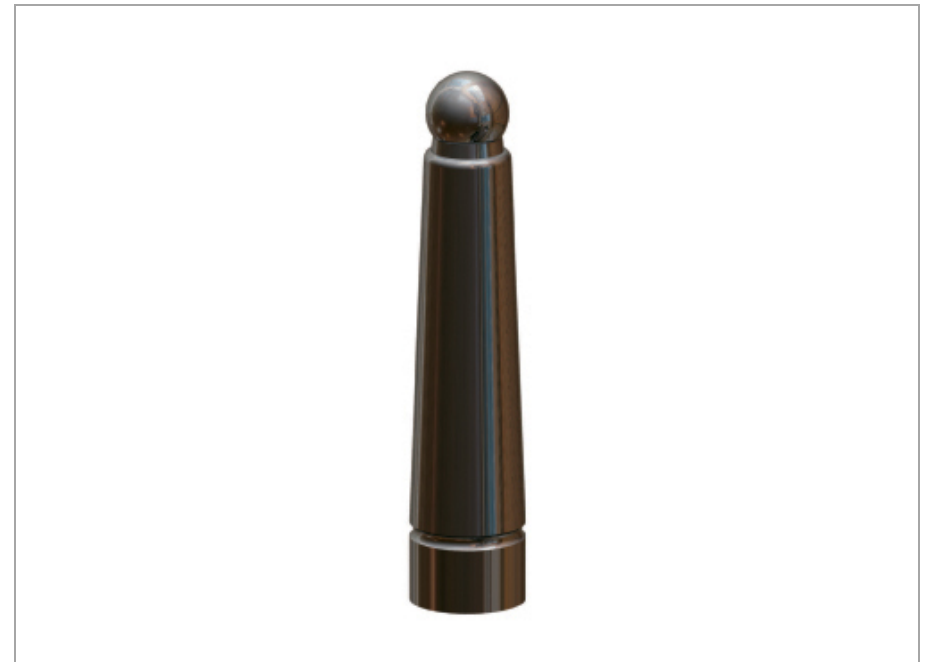
Web: <https://streetfurnishings.co.uk/>

Email: mail@streetfurnishings.co.uk



Renfrew PU Bollard

PRODUCT CODE-



STREET FURNISHINGS LTD

ONE STOP SHOP FOR ALL HIGHWAY PROFESSIONALS

